

UNITED YACHT SALES

“Knot Content”



52' Viking ~ 2003

Builder:	Viking	Fuel Capacity:	1,400 Gallons
Model:	Convertible	Water Capacity:	205 Gallons
Type:	Sportfish	Hull Material:	Fiberglass
LOA:	52'	Speed: Cruise / Max:	34 KTS / 38 KTS
Beam:	17'5"	Displacement:	62,000 LBS
Draft:	5'1"	Location:	St. Petersburg, FL
Engines:	2 x MAN Diesel / 1300 HP / 850 Hours / 2003		

~~\$899,000 Asking Price~~

Now Asking \$799,000



Earning your trust, one boat at a time

701 North Federal Highway • Suite 301 • Stuart, Florida 34994

772.463.3131 • 772.463.3121

united@unitedyacht.com

INTRODUCTION

KNOT CONTENT features the VIP Queen forward configuration. A superb performer with the optional 1300hp MANs. Very typical west coast Florida boat lightly fished. Very well equipped and maintained. This has to be the cleanest example in Florida for a 2003. New front EZ2CY panels on flybridge just came out of the yard with a fresh bottom job, engine service and detail. Props were pulled and computer balanced. All records available. A must see for any 52 buyer.

Seller has reduced price and made the decision to SELL!

ACCOMMODATIONS

She has a three stateroom, two head layout powered by 1300hp MANs and loaded with additional mechanical equipment and fully equipped with electronics. She is fish rigged with Rupp triple spreader outriggers, Release Marine Fighting chair, Electric teaser reels, plus much, much more!

KNOT CONTENT has the optional 1300hp MAN diesels with only 850hrs, Factory hardtop with full enclosure. She is fish rigged but has lightly been fished. The interior shows as new and features an upgraded Decor package. If you are in the 52' market, make a point of seeing KNOT CONTENT

SALON

- Cruise Air with SMX digital control
- Side Sliding door from cockpit via starboard
- Beautiful High Gloss Teak Interior cabinetry and paneling
- Port side Ultra Leather, Bone color L-shaped lounge w/huge storage area under cushions
- Upholstered Tan Valance & pilaster covers w/navy & gold rope trim
- Off-White headliner w/four stereo speakers
- Kenmore Icemaker
- Carpeting - gold on gold
- Eisenglass carpet runner throughout interior
- Hunter Douglas pleated shades
- Sony AM/FM/Home Theater with Surround sound
- Sony DVD/CD/VIDEO player



Salon Ultra Leather L Shaped Sofa



Salon Cabinets



Home Theater / Icemaker



Salon TV

Earning your trust, one boat at a time

701 North Federal Highway • Suite 301 • Stuart, Florida 34994

772.463.3131 • 772.463.3121

united@unitedyacht.com

DINETTE FORWARD – PORT



Dinette area consists of Sony Flat screen color TV in cabinetry forward of dinette with slide out cabinet doors. Dinette is spacious for four adults with storage under seats, High gloss teak table on teak pedestal with Bone colored cushions matching the Ultra Leather Sofa in the salon.

GALLEY FORWARD – PORT

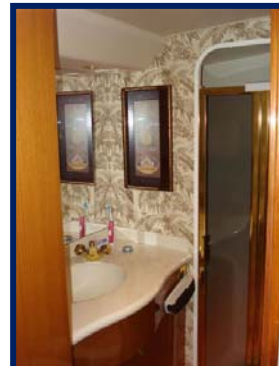


- Three burner, electric Kenyon range w/fan
- Corian countertops, Matterhorn w/bone sink
- Under counter Sub Zero refrigerator
- Teak & Holly sole - Amtico
- Cabinetry & drawer storage under counter tops
- Sharp Microwave
- Insinkerator Garbage Disposal
- Lighting under forward cabinets



MASTER STATEROOM - PORT

Master stateroom features a beautiful, queen pedestal style bed with padded headboard and two drawer storage underneath with pencil lighting around perimeter. Located in stateroom is a double door, cedar lined hanging closet, end tables with drawer storage, Cruisair with SMX digital controls, Sharp Flat screen TV with Sony stereo/VCR.



Master head is ensuite featuring stall shower, Vacuflush head, and Corian countertop (off white) with integral sink with Gold Grohe fixtures. Head contains a mirrored medicine cabinet with overhead lighting.

Earning your trust, one boat at a time

701 North Federal Highway, Suite 301 • Stuart, Florida 34994

772.463.3131 • 772.463.3121

united@unitedyacht.com

FORWARD STATEROOM

- Centerline Pedestal Queen berth with pencil lighting under bed frame around perimeter
- Cedar lined hanging lockers
- (2) large storage cabinets
- Large, cedar lined, under bed storage
- Sharp Flat screen TV
- Cruisair with SMX digital control
- Textured wall covering



STARBOARD GUEST STATEROOM & GUEST HEAD

The second guest stateroom features bunk style berth, cedar lined storage under lower berth, cedar lined hanging locker and Cruisair air conditioning.



Guest head features Vacu Flush head, Amtico teak and holly sole, off white Corian countertops with gold Grohe fixtures.

FLYBRIDGE

- Upgraded stereo speakers
- Lighted 5" compass
- Lounge seats with cushions, storage under
- Full engine instrumentation with alarms
- Storage lockers
- Engine emergency stop buttons
- Trim tab control
- Fuel tank gauge
- Viking fiberglass hardtop with molded-in quartz lights, three- side EZ2CY enclosure with U-zips, recessed overhead 24 volt electric MIYAH teaser reels
- Helm pod console
- Glendinning single lever controls with trolling valves
- Power assist steering
- TV antenna mounted under forward cowling
- Two Release Marine helm chairs with heavy duty SS pedestals and chair covers
- Six rod rocket launcher on aft handrail
- Recessed electronics bins with hinged clear acrylic cover panels with push knobs
- Engine systems monitor with alarms
- 24V remote control spotlight

Earning your trust, one boat at a time

701 North Federal Highway, Suite 301 • Stuart, Florida 34994

772.463.3131 • 772.463.3121

united@unitedyacht.com

FLYBRIDGE CONTINUED



Flybridge Port Side Seating



Forward Bridge



Forward Flybridge Seating



Helm Chairs



Electrical Teaser Reels

ELECTRONICS & NAVIGATION



- ICOM 502 VHF-FM radio
- Furuno GP1900C GPS/plotter
- Stereo, FM and CD
- Rupp Antenna standoffs @ hardtop
- Northstar 962XD color GPS Plotter
- Simrad AP22 Autopilot with RPU80 pump
- 24V remote control spotlight
- Furuno 1943 Radar/plotter

Earning your trust, one boat at a time

701 North Federal Highway, Suite 301 • Stuart, Florida 34994

772.463.3131 • 772.463.3121

united@unitedyacht.com

COCKPIT

- Tackle cabinet module with freezer and bait center
- Dual thermostat on freezer
- Cockpit storage locker
- Refrigerated drink box in step to salon
- Hatches feature SS gas openers
- Four flush mount rod holders
- Engine room door and hatch, lockable
- Starboard side ladder to flybridge
- Rupp outriggers with gold spreaders
- 145 square foot cockpit area
- Transom door and gate
- Transom steps with handrails
- Lighting in overhead and indirect
- Recessed fishboxes with macerator pump
- Transom live well
- Saltwater wash down with Y-valve
- Livewell in cockpit sole
- Fresh water wash down
- Boarding box
- Glendinning Cablemaster outlet and switch
- Bose 151 cockpit stereo speakers



New Cockpit Sunshade



Stern View



Aerial View of Fighting Chair



Fighting Chair



Refinished Fighting Chair



Transom



Tackle Cabinet w/ Freezer

Earning your trust, one boat at a time

701 North Federal Highway, Suite 301 • Stuart, Florida 34994

772.463.3131 • 772.463.3121

united@unitedyacht.com

ENGINE ROOM CONTINUED



Engine Room Access



Air Compressor



Shaft Log



Port Engine



Starboard Engine

EXCLUSIONS

Owner's personal effects.

UPDATES

****Just completed Mann 1000 hour service currently has 950 hrs****

****New cockpit sunshade****

****New flybridge upholstery****

****Refinished fighting chair****

****New bottom job with computer scanned props****

DISCLAIMER

The Company offers the details of this vessel in good faith but cannot guarantee or warrant the accuracy of this information nor warrant the condition of the vessel. A buyer should instruct his agents, or his surveyors, to investigate such details as the buyer desires validated. This vessel is offered subject to prior sale, price change, or withdrawal without notice.

Earning your trust, one boat at a time

701 North Federal Highway, Suite 301 • Stuart, Florida 34994

772.463.3131 • 772.463.3121

united@unitedyacht.com