

UNITED YACHT SALES

“Almost Purfict”



39' Mainship ~ 2001

Builder:	Mainship	Fuel Capacity:	300 Gallons
Model:	390	Water Capacity:	130 Gallons
Type:	Trawler	Hull Material:	Fiberglass
LOA:	39'9"	Speed: Cruise / Max:	12 Knots / 16 Knots
Beam:	14'2"	Displacement:	22,000 LBS
Draft:	3'8"	Location:	Pensacola, FL
Engines:	1 x Yanmar 6LP-STE / 315 HP / 1210 HRS / 2001		

~~**\$159,900 Asking Price**~~

Now Asking \$149,000



Earning your trust, one boat at a time

701 North Federal Highway • Suite 301 • Stuart, Florida 34994

772.463.3131 • 772.463.3121

united@unitedyacht.com

VESSEL WALKTHROUGH

Starting at the fore cabin master stateroom followed by spacious mid-cabin berth to port across from the head compartment with entry doors from the master stateroom and companionway. Up to the spacious salon. "Patio" doors lead directly out to the cockpit and large fiberglass swim platform. To the right of the "patio doors" is the molded staircase leading up to the flybridge, upper helm station and upper deck.

MAIN SALON

The lower helm station is on the starboard side with sliding door to the wide walkway forward and aft. Aft of the helm station is the 5'2" settee/sleeper and hi-lo dinette table that is 4' X 18" wide with 8" extension leaf. Last to starboard is the electrical control panel.

To port is the "L" shaped galley followed by the entertainment center. There is spacious cabinetry built around the entertainment center as well as above and below the galley structure. Two large hatches in the sole lead down to the engine compartment via a stainless steel ladder. The teak and holly sole is covered by an area throw carpet.



Port Aft Entertainment



Starboard Aft Settee

Entry to the salon is via sliding glass "patio" doors with sliding screen enclosure at the aft of the salon. Windows on either side slide open for ventilation and are covered by fabric curtains. The "patio" doors have a sliding drape. There is an overhead centerline teak grab rail and the headroom in the salon is 6'4 1/2".



Salon Looking Aft



Salon Looking Forward

Earning your trust, one boat at a time

701 North Federal Highway • Suite 301 • Stuart, Florida 34994

772.463.3131 • 772.463.3121

united@unitedyacht.com

GALLEY

The "L" shaped galley has a Corian counter top and recessed stainless steel large sink. There are ample storage cabinets above and below the counter plus utility drawers.



- Princess 3 burner stove and oven with lift up cutting board/back splash combination
- GE microwave turntable oven
- NovaKool under/over refrigerator freezer
- 6 gallon hot water heater
- Pressure water system

STATEROOMS AND HEAD

The prominent feature of the master stateroom is the 6'4" long walkaround centerline berth with two major storage drawers at the foot of the berth. Additional storage lockers line both port and starboard sides and there is 6'2" headroom. Ventilation is provided by two opening ports plus the overhead 20" X 21" hatch. A Fireboy Xintex CO2 detector is mounted on the bulkhead adjacent to the private head entry door. A privacy door separates the master stateroom from the companionway that leads up to the salon past the mid cabin and head.

The mid cabin stateroom is to port across from the head. It has a privacy door and double wide berth that measure 6'4" X 4'11" wide. There is a large hanging locker in the corner and an overhead clothes rod. The cabin has an opening port and 13" X 13" overhead hatch.

The head compartment is accessible to both the master stateroom via private door and the mid cabin via the companionway door. It is air conditioned and has 6'7" headroom in addition to a 13" X 13" opening hatch and 12" X 5" opening port. There is a Vacuflush M.S.D., 13" round molded sink and two storage compartments above the counter with additional storage beneath the sink. An 18" round mirror is above the sink. The compartment has a glass partitioned shower stall with bi-fold doors and a molded seat.



Head



Shower Stall

Earning your trust, one boat at a time

701 North Federal Highway, Suite 301 • Stuart, Florida 34994

772.463.3131 • 772.463.3121

united@unitedyacht.com

DECK



The bow pulpit has an inset roller for the #22 Danforth type anchor (a second anchor is stored in one of the transom storage compartments). The anchor has both chain and rode which is managed by a Lewmar electric windlass with deck switches. Chain and rode are fed into an anchor locker which is partitioned into two sections. There is a freshwater wash down next to the pulpit. Traversing fore to aft on either side of the salon is a 13" wide walkway with 16" high bulwarks. The starboard walkway has access to the sliding door at the lower helm station.

The cockpit is reached via the port or starboard walkways or the salon sliding door. It has a sole hatch leading to the steering gear and a large hatch over the generator, dripless shaft seal and water pumps.



There are storage compartments built into the top of the transom between the 25" X 28" outward opening transom door leading out to the swim platform. There are 30 amp service inlets at the cockpit and the bow next to the windlass. Raw water and freshwater faucets as well as a freshwater handheld shower are also at the transom.

A molded staircase leads up to the upper deck and flybridge. The flybridge has a green bimini, four way enclosures and a matching canvass curtain around the upper deck safety rail. A mast supports the radar dome. The flybridge has a 31" X 20" wide pilot seat and twin port and starboard lounges that are 6'4" long with storage beneath. A convenience table is behind the pilot seat has a cooler compartment and opens from 31" X 15" wide to 41" X 31" open.

A green diffusing screen covers the windows around the salon and each forward facing window has a windshield wiper.



Flybridge Settee



Flybridge Table



Aft Upper Deck

Earning your trust, one boat at a time

701 North Federal Highway, Suite 301 • Stuart, Florida 34994

772.463.3131 • 772.463.3121

united@unitedyacht.com

ELECTRONICS AND HELM

Raymarine Sonar, Depth finder, radar, auto pilot and GPS chart plotter are duplicated at the lower and upper helm stations.

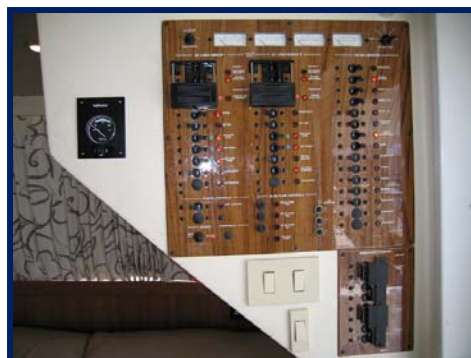


- Raymarine E80
- Raytheon RP650 Ray Pilot
- Raytheon ST40 Bidata
- Hailer
- Horizon Spectrum VHF radio
- Rule Aqua Meter compass



ELECTRICAL

- Kohler 800 generator w/181 hours
- (2) MarineAir reverse cycle air conditioners (with humidity mode)
- (3) Fireboy Xintex CO2 monitors
- JVC AM/FM/CD Stereo with JVC CH-X1000, CD/RW, 12 disc changer
- ACR RCL-100 Searchlight (lower and upper controls)
- 13" GE TV/VHS
- Tru Charge 40 multi stage charger
- 12 volt accessory plug at upper helm
- (2) 4D house batteries
- 12 volt generator battery
- Perko battery selector switches
- GFCI receptacle



Earning your trust, one boat at a time

701 North Federal Highway, Suite 301 • Stuart, Florida 34994

772.463.3131 • 772.463.3121

united@unitedyacht.com

ENGINE DETAILS AND MECHANICAL EQUIPMENT

Single Yanmar model 6LP-STE, 315 hp with closed cooling system and 2.800:1 ratio Velvet Drive transmission. 26RX17 five blade bronze propeller on 1 3/4" Shaft. She burns 4 gallons per hour at 7 knots.



- Kohler model 8302 generator
- Sleipner, 9 hp Side Power SP 95T Bow Thruster
- Sea Star hydraulic steering
- Bennett trim tabs
- Racor 900MA main engine filter
- Racor 120RMAM generator filter
- (4) Bilge pumps
- Sea Fire 1301 Halon model#88-500 automatic fire suppression system

MISCELLANEOUS

- Dual stainless steel air horns
- Bimini top with four side enclosure
- Canvas enclosure around upper deck railing
- (2) 150 gallon aluminum fuel tanks
- Brass ship's bell
- 15" stainless steel steering wheel at upper helm
- 24" Teak steering wheel at lower helm
- Weems & Plath Barometer and Clock instruments mounted on salon bulkhead
- Weems & Plath yacht lamp mounted in salon
- First Alert Type B:C, model FE 10 G, fire extinguisher mounted in salon
- Boat hook
- (2) Cockpit mounted rod holders
- (2) Anchors with chain and 5/8" rode

BROKER'S REMARKS

ALMOST PURFICT lives up to her name. She is well maintained, is in exceptionally perfect condition and is clean throughout. Present owner has had her for two years and doesn't have the time to use her as planned. She has been a freshwater boat for half of her life and at time of purchase had no bottom blisters.

DISCLAIMER

The Company offers the details of this vessel in good faith but cannot guarantee or warrant the accuracy of this information nor warrant the condition of the vessel. A buyer should instruct his agents, or his surveyors, to investigate such details as the buyer desires validated. This vessel is offered subject to prior sale, price change, or withdrawal without notice.

Earning your trust, one boat at a time

701 North Federal Highway, Suite 301 • Stuart, Florida 34994

772.463.3131 • 772.463.3121

united@unitedyacht.com